

Indonesia

DEMOGRAPHIC INFORMATION



1,922,570

Area (sq km)

237,641,326

Population

21.5

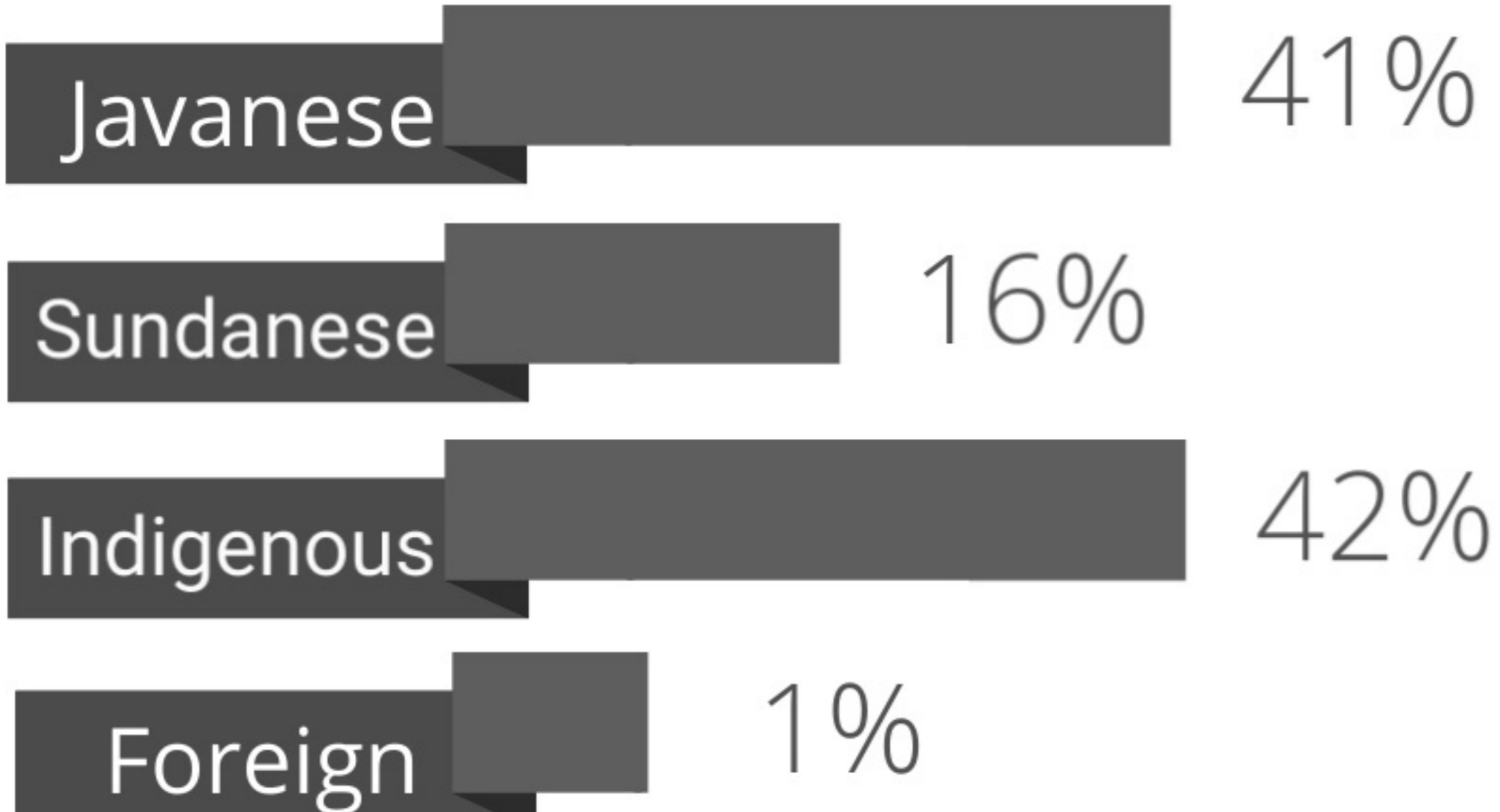
Mean Maternal Age

27.8%

Children 14 Years or Younger

0.7%

Children with Disabilities



Commonly Spoken Languages



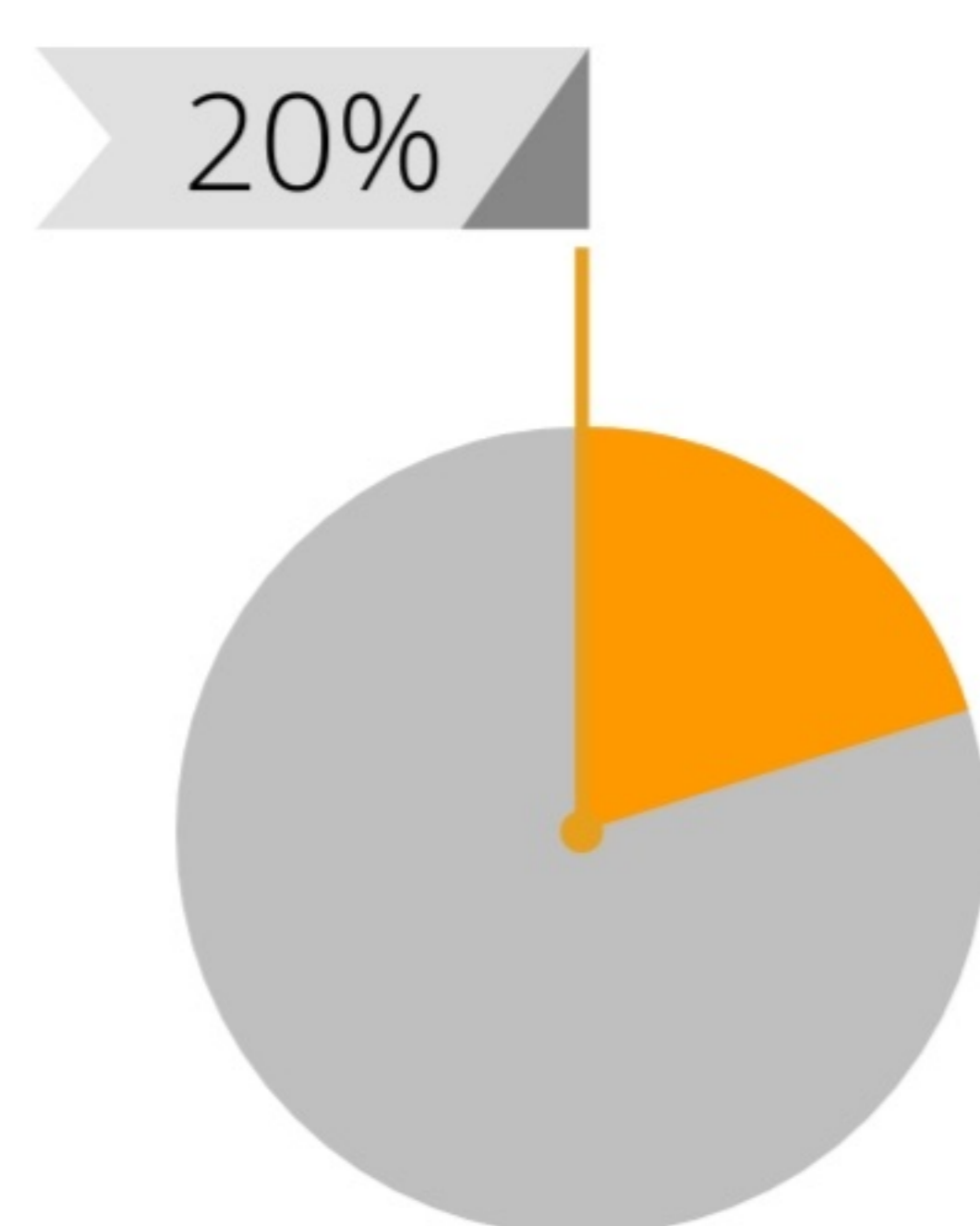
Ethnic Groups

50

Professional Music Therapists

20%

Work With Young Children



\$27-44

Individual

\$15-30

Group

\$27-44

Assessment

Average Rates (USD)

MUSIC THERAPY



Early Childhood Work Settings

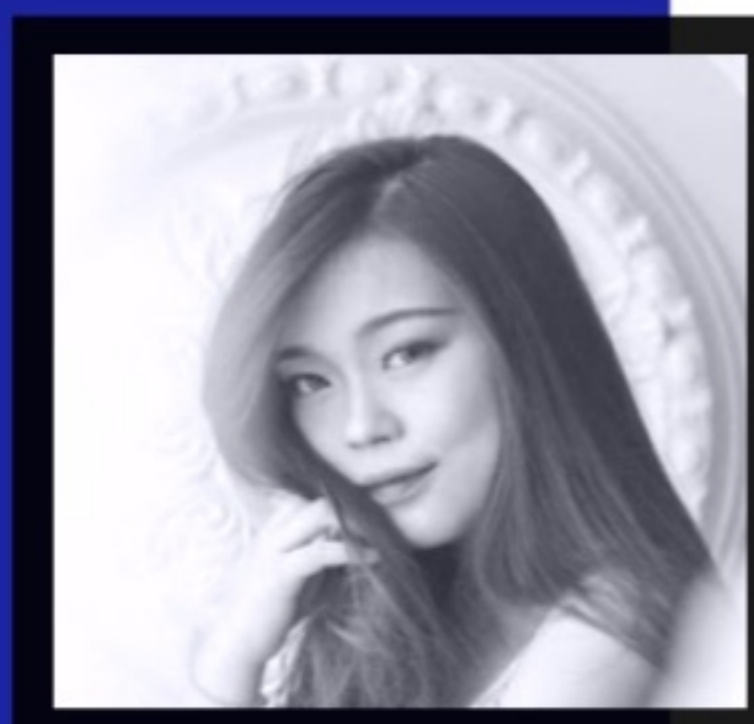
Facility Budgets

Private Pay

Funding Sources

Jessica Hariwijaya, S.Sn

Siloam Hospital, Karawaci



Kezia K. Putri, MMT, MTA, MT-BC

Universitas Pelita Harapan

